

## Conventional Dual Heat Detector C-9103



### Features and Benefits

1. Fixed Temperature and Rate of Rise Detection
2. Built-in Remote Indicator Output
3. Twin LED for 360° vision
4. Low profile design

### Description

C-9103 Conventional Rate of Rise and Fixed Temperature Heat Detector (hereinafter called the detector) checks ambient temperature with the sensitive feature of thermo-sensitive elements. With a built-in SCM, it's fixed with highly reliable fire judging program. Special processing technology ensures its stable and reliable operation. Matching with P-9907 Active End of Line Unit, it can connect with compatible fire alarm controller to conduct the processing of detector signals.

### Technical Specifications

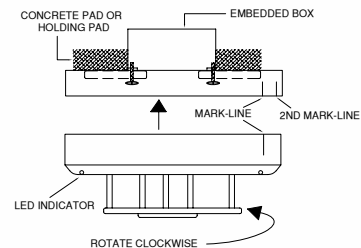
- Standard: EN54-part5,part6
- Approval: LPCB,CE
- Protection rating: IP 32
- Detecting Range: 30 sqm for normal area; and 20 sqm for high risk
- Operating voltage: 24Vdc (9Vdc to 24Vdc) polarized
- Operating Current:
- Stanby: 0.8mA; Alarm: 1.4mA
- Operating temperature: -10°C to +50°C
- Relative humidity: 95%
- Application: Indoor use
- Material and colour: ABS, off-white
- Wiring: 1 pair polarized
- Dimensions: diameter 10cm; height 5cm

### Selection of compatible Control Panels

Compatible with all GST Conventional panel and GST Intelligent Fire Alarm Panels using Zone monitor module:

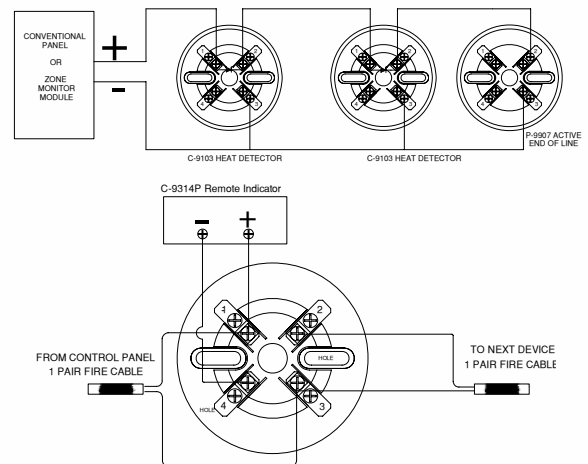
### Detector Installation

It is installed onto a standard one gang electrical box with a mounting hole that have 6.5cm spacing. Point the detector in the base by the mark-line and secure the detector in that position by rotates it clockwise until it reaches the next mark line.



### Wiring and Connection

Connect the wires to the required terminal according to the wire diagram with matching active end of line (P-9907).and (DZ-03D) required base. Using active end of line can connect up to 15 detectors and base with diode. Using 4.7KΩ end of line resistor can connect up to 25 detectors. The cable must be fire rated type and the size depends on the distance and application. Minimum size gauge 1.0mm<sup>2</sup>(18 AWG)



### Ordering Information:

Part No	Description	Weight/Kg	Pack Qty per Box
C-9103	Conventional Dual Heat Detector	0.123	120
DZ-03	Detector Base -EOLR	0.05	360
DZ-03D	Base with Diode AOL	0.05	360

MANUFACTURED IN ACCORDANCE WITH



Note: Specifications are subject to change without notice.

**GST England** Lion Court, Staunton Harold Hall, Melbourne Road, Ashby de la Zouch, Leicestershire, England LE65 1RT Tel: +44 1283 225 478 Fax: +44 1283 220 690

**GST Dubai** ZA04, Jebel Ali Free Zone, P.O.Box 17998, Dubai UAE Tel: +971 (0)4 8833 050 Fax: +971 (0)4 8833 053

**GST China** 80, Changjiang East Road, Economic & Technology Development Zone Qinhuangdao, Hebei, China Tel: +86(0)335 850 2383 Fax: +86 (0)335 850 7588



www.gst.uk.com  
info@gst.uk.com